

FOUNDATION UPDATE

Featuring the latest news from the Maricopa Community Colleges Foundation
August 2022



We make post-secondary education and certifications accessible and affordable.

Support for the Microsoft Datacenter Academy Grows, Helps Build 21st Century Workforce

Thanks to the continued support of the [Microsoft Corporation](#), Estrella Mountain Community College (EMCC) and Glendale Community College (GCC) students seeking jobs in the information technology (IT) sector, have access to a streamlined tract via the Microsoft Datacenter Academy located on the EMCC campus.



The collaboration, [highlighted in this video](#), is part of the Microsoft Datacenter Academy program which strives to attract an increasing number of students that are typically underrepresented, in the growing IT sector in communities in which Microsoft operates datacenters. Microsoft opened a datacenter in El Mirage last year and another is planned for Goodyear in the near future. The \$100,000 grant will allow the colleges to continue to support cohorts of Microsoft Datacenter Scholars with scholarships, helping to increase digital literacy in the community and build a 21st century workforce.

"This partnership between Microsoft, Estrella Mountain Community College, and Glendale Community College will help our students build digital skills and provide career pathways in the high-demand, high-paying information technology sector serving the west valley and Arizona as a whole," said Dr. Rey Rivera, President, Estrella Mountain Community College.

The Microsoft Data Center Academy provides students with hands-on experience with industry hardware including servers, storage devices and networking equipment, all donated from Microsoft datacenters. Participating students take courses leading to a Certificate of Completion or an Associate of Applied Science Degree and can be certified in multiple CompTIA areas.

"The funds from Microsoft are so incredibly generous," said Dr. Teresa Leyba Ruiz, President, Glendale Community College. "We are very grateful for their support in creating the Datacenter Academy, offering internship opportunities, and providing scholarships, all of which are testimony to their dedication to our students who are working towards a brighter future. Glendale Community College is honored to be partnered with Microsoft as we work together to prepare our students for jobs in the information technology field."

Amy King, a cyber security student at EMCC and a Microsoft intern is amazed by the opportunities she's been given. "Every day I'm learning something new," she said. "I come in ready to learn and I'm experiencing new things and new challenges." Isa Hernandez, a student and intern from GCC adds, "I was really excited because it's Microsoft! Everyone encourages you to do more than what you know, they want you to do better and learn more."

Lyon's Pride Scholarship Recipient Focuses On Starting Business

Mesa Community College (MCC) student and Lyon's Pride Scholarship recipient Samantha, is a first-generation student well on her way of achieving her goal of being a business owner, an idea that was sparked when she was in school for massage therapy. "My instructor was a business owner herself and that was very inspiring to me," Samantha said. "She encouraged me to go to college and pursue my dream." After graduating from MCC, Samantha plans to use her degree to open a spa.



Samantha credits her scholarship as bringing her one step closer to being the successful woman she knows she can be. "I chose MCC because it opened a window of opportunity for lower-income students like me. I'm getting the chance to think bigger and change my mindset," she said. "At first, the idea of college didn't seem available to me because not only was it too much money, but I thought I was set on just being a massage therapist. I thought that was enough, but I soon realized I had more potential in me. I asked myself why just work at a spa when I can own one?"

The Lyon's Pride Scholarship program was established by the [Russ Lyon Foundation](#) to positively impact qualifying student's lives, preferencing head of household and first in family students. You can read more about this scholarship in the Foundation's 2020-21 annual report *Adapting, Collaborating and Looking Ahead*, [here](#).



Fasthorse Scholarship Carries On Legacy of Helping Yavapai Students Pursue Higher Education

Molly Fasthorse's tombstone reads, "She walked in beauty," a statement representing a woman immensely proud of her Tolkopya Yavapai heritage and dedicated to the education and literacy of Indigenous/Native children, in order to thrive in the larger world.

Molly was a product of the "Indian School" model of cultural suppression and was trained to be a domestic, eventually

employed by several prominent families in California. During World War II Molly worked for an aircraft company and afterwards, the Salvation Army where her experience dealing with underrepresented communities greatly affected her attitude towards higher education. While there, Molly volunteered at UCLA and was part of a linguistic study in which she provided hours of recordings of her Yavapai dialect, helping linguistics students document Yavapai grammar, semantics and culture with her translations of traditional stories. This opportunity piqued her interest in preserving the language and led her on a pathway focused upon helping students from Yavapai tribes pursue higher education, feeling it was a means for students to move forward in their communities and society and to protect the Tribes.

Upon retirement Molly moved back to Fort McDowell, Arizona. She will be remembered for her patience, diligence and the magical connection she had with her community and her students, helping them to "hanik myami" (walk in beauty).

The Molly Fasthorse Trust Higher Education Scholarship annually supports 8-16 Native American students of Yavapai descent attending any of the Maricopa Community Colleges (MCCCD). MCCCD is committed to supporting our underserved populations including our Native students. The MCCCD [American Indian Outreach](#) office provides many resources including information on student clubs and organizations, early outreach programs like the Hoop of Learning and institutes at several of the colleges. For more information or to support Native American student scholarships, please contact Judy Sanchez, Chief Development Officer, Maricopa Community Colleges Foundation, at judy.sanchez@domail.maricopa.edu.

Winning Cohort Announced For Small Business Venture Funding Program

Several Maricopa Community Colleges are participating in a collaboration with the [National Association for Community College](#)

[Entrepreneurship](#) (NACCE), [Everyday Entrepreneurship Venture Fund](#) (EEVF)

and the City of Phoenix. The collaboration is part of the NAACE/EEVF Venture Fund phase II program which is raising money to provide capital to Maricopa student-entrepreneurs for start-up and scale up of small businesses. Faculty and Development Directors from the Maricopa Colleges participating with support of the Maricopa Colleges Foundation, have raised a venture fund from local donors, including the City of Phoenix, along with grant funds from NACCE/EEVF. The City of Phoenix support of \$20,000, along with a \$20,000 grant from the National Association for Community College Entrepreneurship, will help ignite young entrepreneurs across Phoenix and Maricopa County. To date the colleges have raised more than \$50,000.

In May 2022 the third cohort of student-entrepreneurs were selected to receive \$2,500 each for the launch and expansion of some interesting and exciting small businesses. In addition to start-up capital the student-entrepreneurs receive ongoing mentoring and advising from the [Maricopa Small Business Development Center](#), and campus faculty and staff.

For a list of the student-entrepreneurs who were awarded capital funds and to read more, [click here](#).



Scholarships Support Helping Hands For Single Moms

Obtaining a college degree is an overwhelming prospect for many, especially for single moms who have to manage many things on their own including childcare, a home and other responsibilities.

That's where Helping Hands for Single Moms comes in. Since 2009, the organization has been assisting low income single mom families as the mother attains a post-secondary education, financial independence and a positive family legacy. Scholarships from the Maricopa Community Colleges Foundation are an important component of the support they receive and during the Spring 2021 semester scholarships were provided for 41 students attending a Maricopa Community college.

One of their many success stories is Bethany, who recently completed her concurrent nursing program at Glendale Community College and Northern Arizona University and now works as a registered nurse for HonorHealth.

To learn more about Helping Hands for Single Moms, including a recently launched Shared Housing Program to help families cope with the rapidly rising cost of rent, [click here](#).



Partnership With Equality Maricopa Embraces Inclusivity

Meet Victor, a recent South Mountain Community College graduate and proud member of the LGBTQ+ community. Throughout his youth, Victor struggled with accepting himself and faced malicious bullying from his peers. At one point, the torment caused him to drop out of school, but Victor persevered and today is a community college graduate, embarking on a new journey, that involves the university of his dreams!

The Maricopa Community Colleges District and Equality Maricopa embrace inclusivity and respect for all members of our community. [Click here](#) to learn more about Equality Arizona. To support the Equality Maricopa PRISM Scholarship, visit mcccdf.org/prism-scholarship-fund.

August Is National Make A Will Month. What Is Your Legacy?

Have you thought about leaving the Foundation in your will? With August being National Make A Will Month, now is the perfect time to start thinking about your legacy.

Many of our supporters recognize the importance of making education accessible and have chosen to leave a percentage of their will to the Maricopa Community Colleges Foundation. Large estates or small estates, it does not matter as we've received gifts of 1% all the way up to 100% of the estate and all of them have made a distinct and lasting impact on our students as well as our donors.



To learn more about planned giving opportunities, [click here](#) or contact Judy Sanchez, Chief Development Officer, Maricopa Community Colleges Foundation at 480-731-8739 or judy.sanchez@domail.maricopa.edu to discuss the possibilities.



Events Provide Opportunities For Entrepreneurs

Maricopa Entrepreneur Days is presented by the [AZSBDC Network](#) and is an opportunity for any aspiring or current entrepreneur to learn about Advancing Entrepreneurship grant opportunities including scholarships and small business development programs.

Discover the available community resources for entrepreneurs and how you can get involved right now, by [registering here!](#)

Event Details*:

- Wed, Aug 31 | 10:00 am - 2:00 pm | Estrella Mountain Community College
- Wed, Sep 7 | 10:00 am - 2:00 pm | Paradise Valley Community College
- Wed, Sep 14 | 10:00 am - 2:00 pm | Chandler-Gilbert Community College
- Wed, Sep 28 | 10:00 am - 2:00 pm | Glendale Community College
- Wed, Oct 12 | 10:00 am - 2:00 pm | Mesa Community College
- Wed, Oct 19 | 10:00 am - 2:00 pm | Rio Salado College
- Wed, Oct 26 | 10:00 am - 2:00 pm | Scottsdale Community College
- Wed, Nov 16 | 10:00 am - 2:00 pm | Phoenix College
- Wed, Nov 30 | 10:00 am - 2:00 pm | South Mountain Community College
- Wed, Dec 14 | 10:00 am - 2:00 pm | GateWay Community College

**All events will be streamed virtually for those that cannot attend in-person.*



McCarthy Building Companies Inc. Shows Continued Support to SMCC Construction Trades Institute

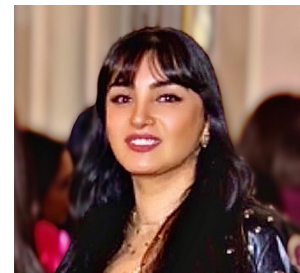
McCarthy Building Companies, Inc., founding partner of the South Mountain Community College (SMCC) Construction Trades Institute, donated \$12,500 to the program in a small check presentation ceremony, held earlier this month.

The donation will continue to support construction trades students for the next academic year and we thank McCarthy for their partnership and continued commitment in helping to provide training and career opportunities to the next generation of students.

Learn more about the Construction Trades Institute, [here](#).

Foundation Welcomes Program Coordinator

We are pleased to introduce Hiba Ghaffor as the new Foundation Program Coordinator, responsible for supporting the organization on a variety of special projects including building dashboards to reflect the work in grants, scholarships, emergency funds and scholarship reviewers. She also plays a valuable role as part of the 4DX WIG's for both the Development and Fiscal teams and will be assisting with the launch of a new Foundation website, data migration project and several upcoming special events.



With more than 12 years of experience at the Maricopa Community Colleges, including positions at Phoenix College, Glendale Community College and Mesa Community College, Hiba's background in academic affairs, financial aid, enrollment services and other student service areas position her well to help with student scholarships and student support services for the Foundation.



At Venture Café Phoenix we connect innovators to make things happen

You will connect with a variety of innovators from different industries, learn, share, and have fun.

It's not just another networking event. Come experience it for yourself.

OFFICE HOURS

Are you an entrepreneur? Do you need a question answered from an expert? Our OFFICE HOURS experts are there to help. Request a meeting from our many subject matter experts.

<https://bit.ly/3OrmLJB>

BECOME A SPONSOR!

Sponsorships are 100% tax deductible through the Maricopa County Community College District Foundation, the 501(c)(3) nonprofit organization designated to receive and manage gifts for Venture Café Phoenix. For more information, contact **Tom Schumann** - schumann@ceigateway.com



City of Phoenix



Arizona State University



Have questions? Email hello@venturecafe phoenix.org

Powered by:



Have you signed up to support the Foundation through a loyalty program?

When you shop using **AmazonSmile** and designate the Foundation, Amazon will donate 0.5% of the price of your eligible purchases back to the Maricopa Community Colleges Foundation.

Fry's Community Rewards is another program that can support our students as well with every eligible purchase you make with your Fry's VIP card. Simply log-in to your Fry's account and search for the Maricopa Community College District Foundation either by name or LV566 and click ENROLL.

Visit Us On Social Media



[Home](#) | [Contact](#) | [About Us](#) | [Giving](#)

Be sure to add our email address to your address book or safe senders list so our emails get to your inbox.

The Maricopa Community Colleges Foundation respects your online time and privacy. Please let us know

which types of electronic communications you wish to receive from us by visiting our [subscription center](#).
If you no longer wish to receive email messages from The Maricopa Community Colleges Foundation,
please click the unsubscribe link below.

[Privacy Policy](#) | [Unsubscribe](#)

[Maricopa Community Colleges Foundation](#)
2419 West 14th Street, Tempe, AZ 85281-6941